



# Available

## Restaurant Space Available

- 2,200 SF free-standing building
- Excellent visibility to main retail corridor in Daphne Highway 98 (37,688 CPD)
- Approximately 1 mile South from Interstate 10 (60,281 CPD)
- Located in Baldwin County, Alabama's fastest growing county, with nearly 7 million tourists annually

29017 Hwy 98  
Daphne, AL

Emily Miller  
First Vice President  
+1 251 694 5077  
[emilyj.miller@am.jll.com](mailto:emilyj.miller@am.jll.com)

[us.jll.com/retail](http://us.jll.com/retail)

## Area Retailers

**DUNKIN'**



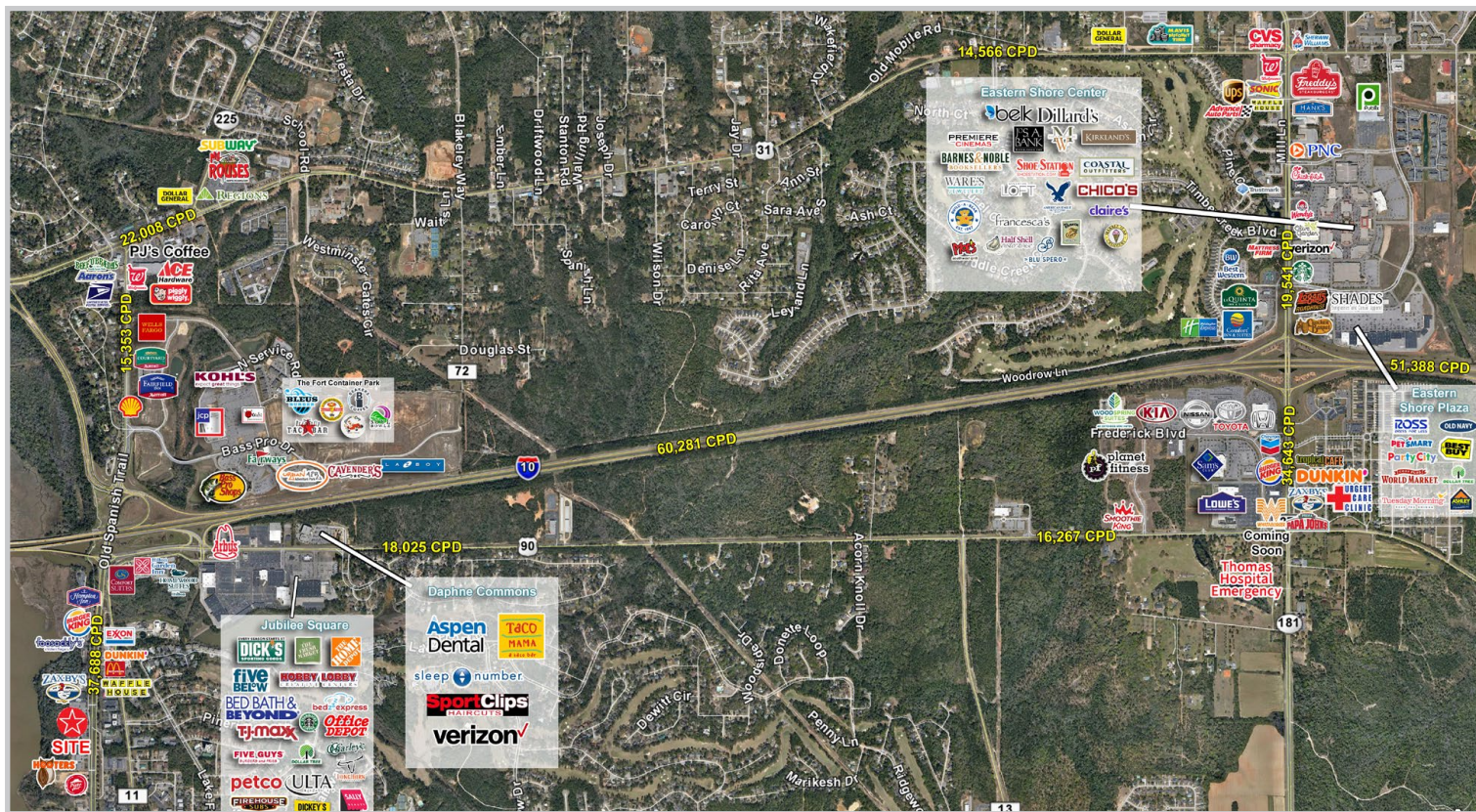
**HOOTERS**



### DISCLAIMER

© 2020 Jones Lang LaSalle IP, Inc. All rights reserved. All information contained herein is from sources deemed reliable; however, no representation or warranty is made to the accuracy thereof.

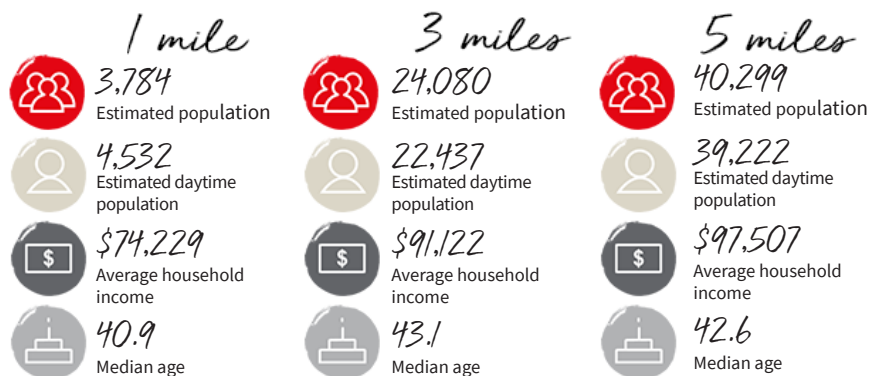




## Site Aerial



## Estimated Demographics



Source: Esri 2020

## DISCLAIMER

© 2020 Jones Lang LaSalle IP, Inc. All rights reserved. All information contained herein is from sources deemed reliable; however, no representation or warranty is made to the accuracy thereof.